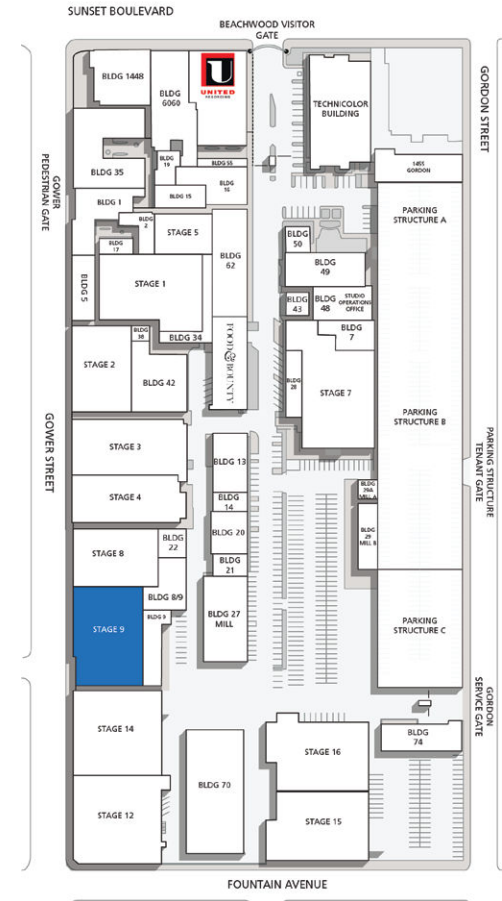
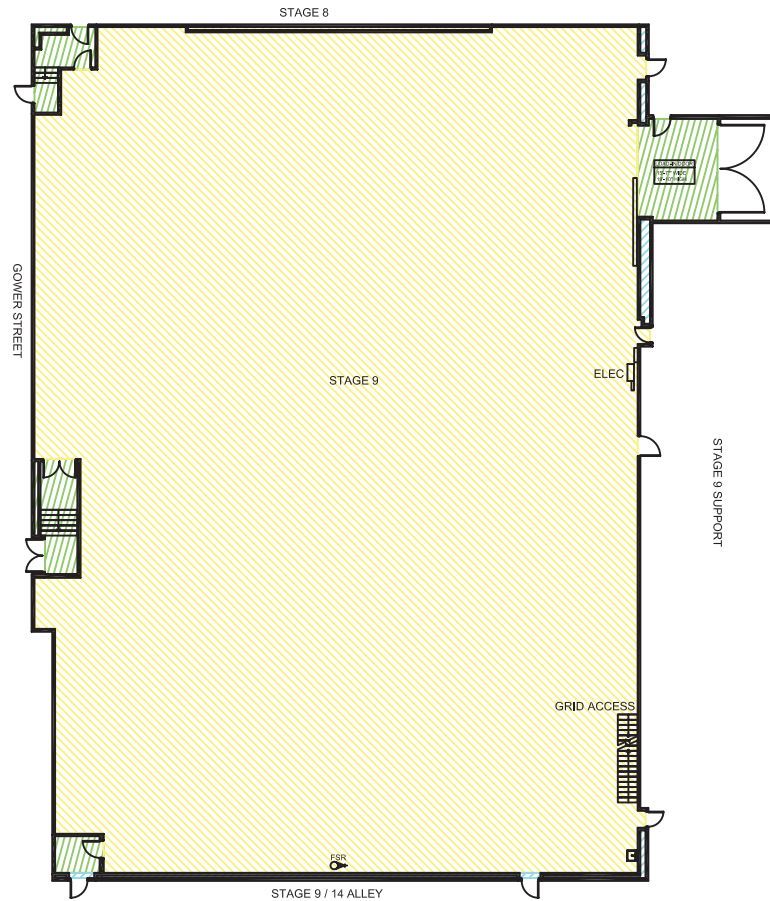
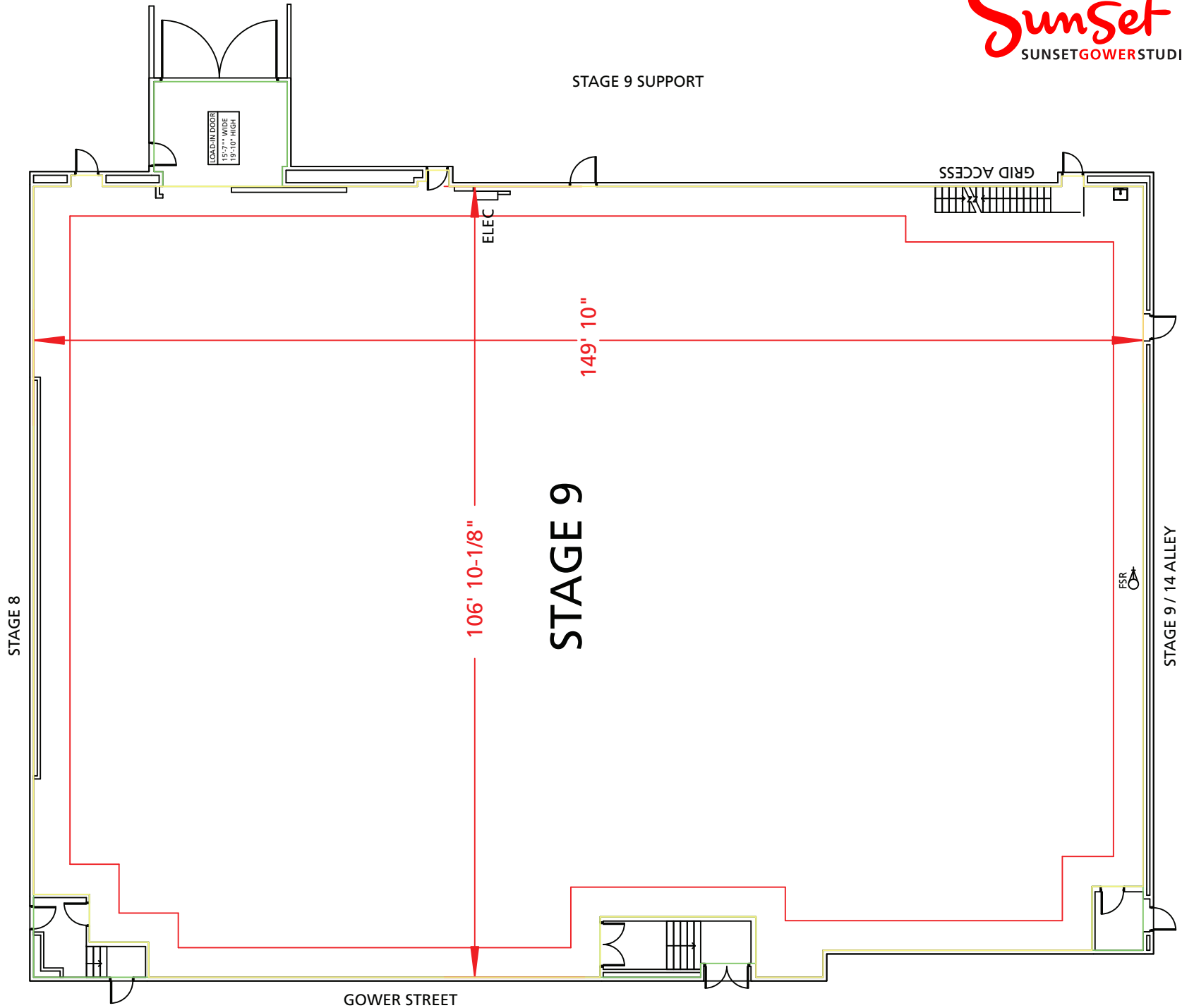


# Stage 9



Width	Length	Height (Perms)	Total Stage Square Footage	Floor Type	Door (WxH)
106'7"	149'10"	34'8"	16,275	Wood	15'5" x 19'11"

\*Dimensions are for overall stage size and do not take into account stage irregularities. Production company representative should verify dimensions for particular applications.



\*Dimensions are for overall stage size and do not take into account stage irregularities. Production company representative should verify dimensions for particular applications.

## Stage Specifications: Stage 9

### Stage Specifications - (Dimensions Include 4' Fire Lane)

Width – 106' 7"

Length – 149' 10"

Height (Perms) – 34' 8"

Total Square Footage – 16275

Floor Type – Wood

Elephant Door (W X H) – 15' 5" X 19' 11"

### Support Space- (Available On Stage)

Support 8/9: 4 Support Rooms and 1 Kitchen (Not Including Support 9)

### Heavy Equipment

Stage Management to authorize

### Electric Service

Production Power - 120/208 800 Amp Per Phase Bus Bar, 4800 Amp Total Standard. Additional 2400 Amps Available

240 Volts - No

480 Volts - No

Tech Power - Available

Power In Grid – Available

### HVAC

(2) 33 Ton (Nominal) Cooling Only Package Unit

33 Ton Cooling / Heat Package Unit

Redlight Control - Yes

Ventilation - Yes

Heating – Yes

### Stage Extras

Hose Bib - No

Gas - No

Drain - Yes

Compressed Air - No

Wireless Internet – Available

Phone – Available

Fax – Available