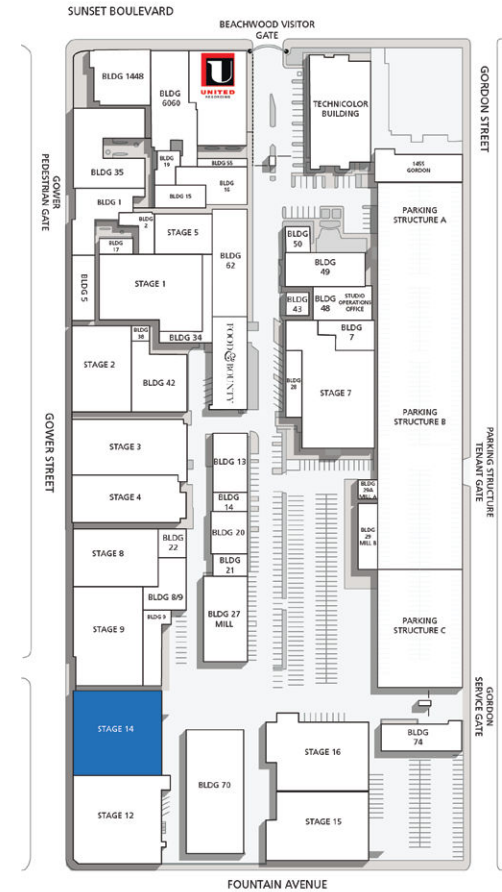
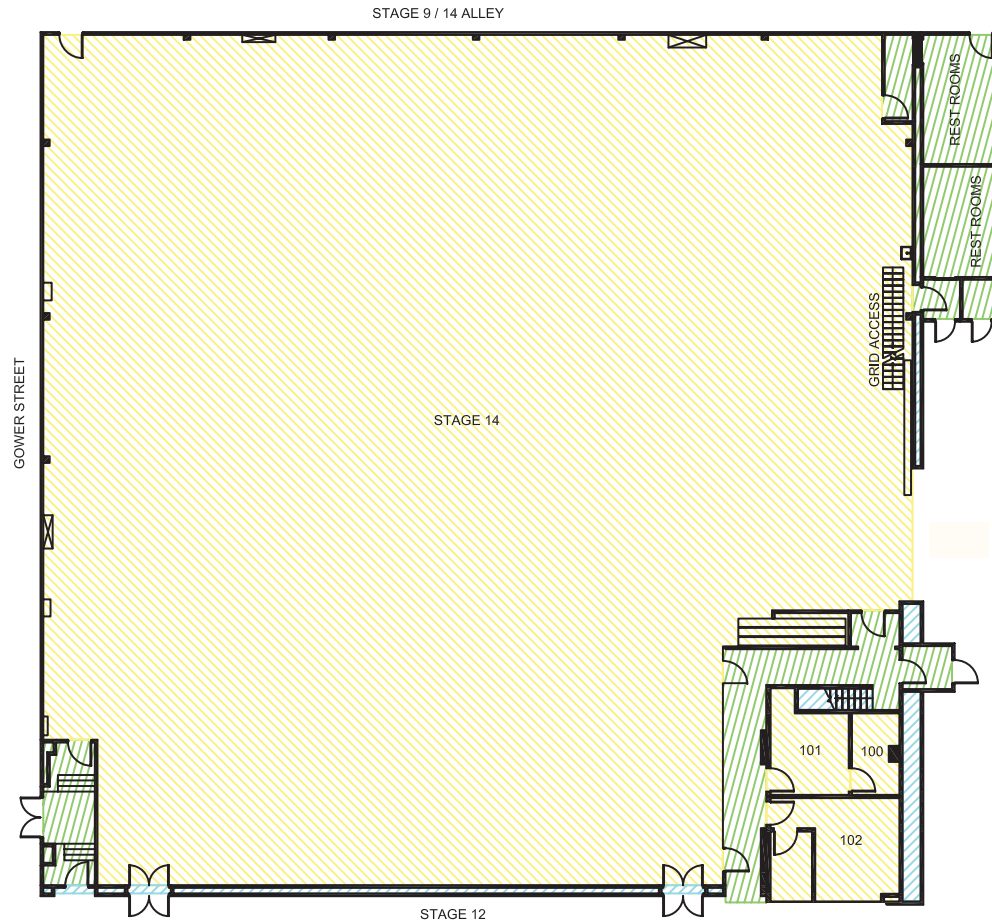
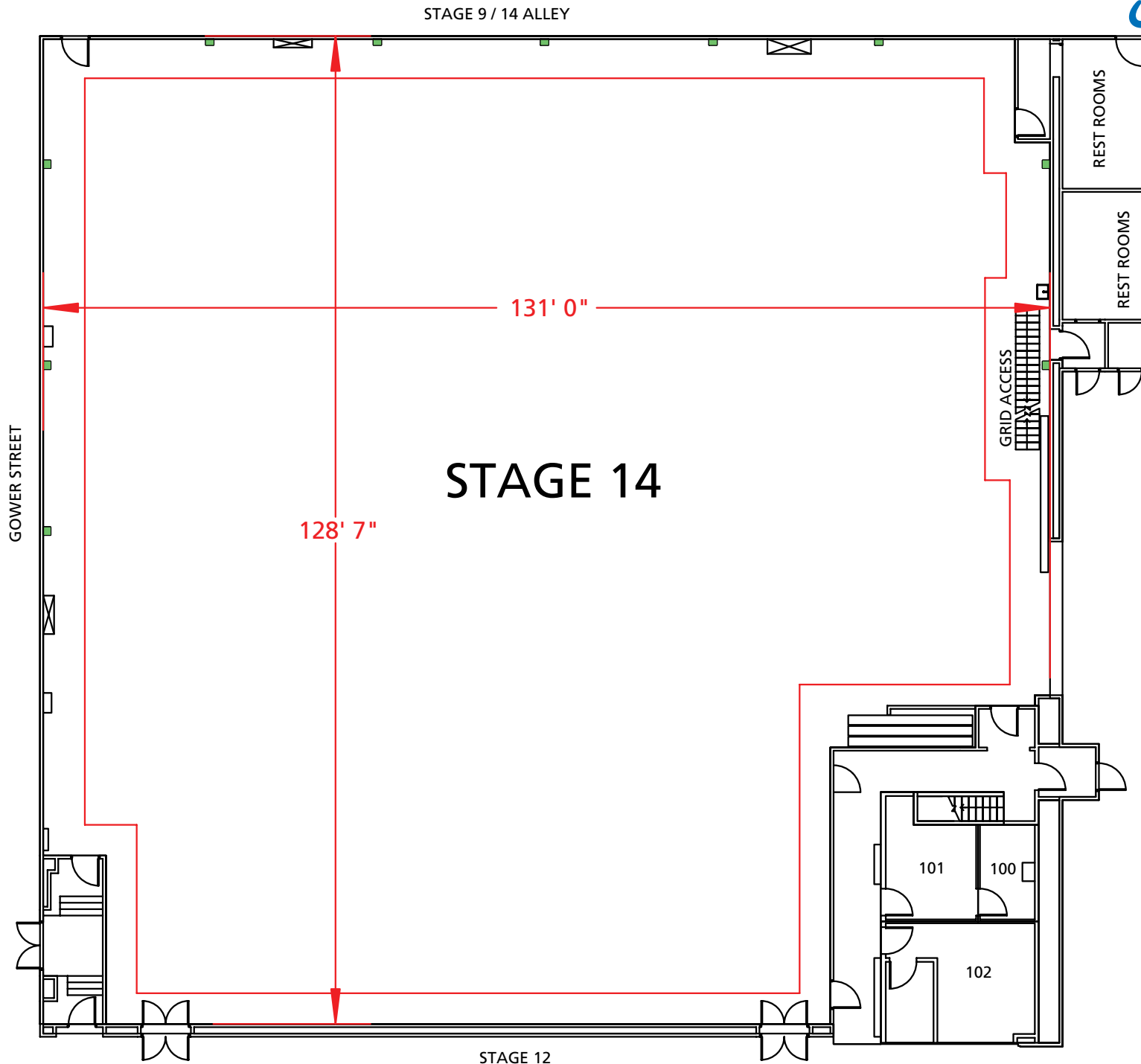


# Stage 14



| Width | Length | Height (Perms) | Total Stage Square Footage | Floor Type | Door (WxH)   |
|-------|--------|----------------|----------------------------|------------|--------------|
| 131'  | 128'2" | 35'4"          | 17,029                     | Wood       | 18' 3" x 20' |

\*Dimensions are for overall stage size and do not take into account stage irregularities. Production company representative should verify dimensions for particular applications.



\*Dimensions are for overall stage size and do not take into account stage irregularities. Production company representative should verify dimensions for particular applications.

# Stage Specifications: Stage 14

## Stage Specifications - (Dimensions Include 4' Fire Lane)

Width – 131'

Length – 128' 2"

Height (Perms) – 35' 4"

Total Square Footage – 17,029

Floor Type – Wood

Elephant Door (W X H) – 18' 3" x 20'

\*NOTE\* Stage 14 is connected to Stage 12 via two pass-thru standard double doors

## Support Space- (Available On Stage)

3 Offices, 3 Support Rooms (Shared with 12)

Dressing Rooms, Wardrobe, and Hair + Make Up rooms are available in adjacent buildings

## Heavy Equipment

Stage Management to authorize

## Electric Service

Production Power - 120/208 800 Amp Per Phase Bus Bar, 4800 Amp Total Standard; Additional 2400 amp service available

240 Volts - No

480 Volts - No

Tech Power - Available

Power In Grid - Available

## HVAC

HVAC (3) 30 Ton Cooling / Heat Package Unit

(2) 15 Ton Cooling/Heat Package Units

Redlight Control - Yes

Ventilation - Yes

Heating - Yes

## Stage Extras

Hose Bib - No

Gas - No

Drain - Yes

Compressed Air - No

Wireless Internet – Available

Phone – Available

Fax – Available