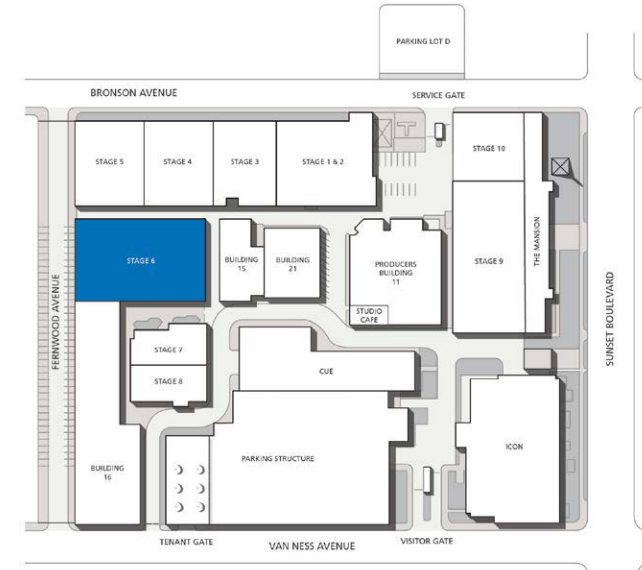
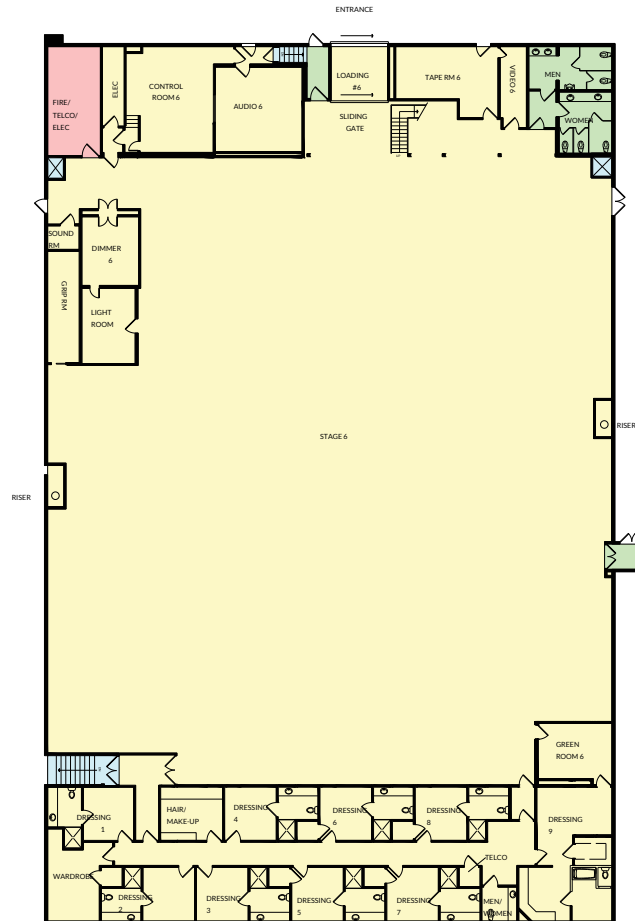
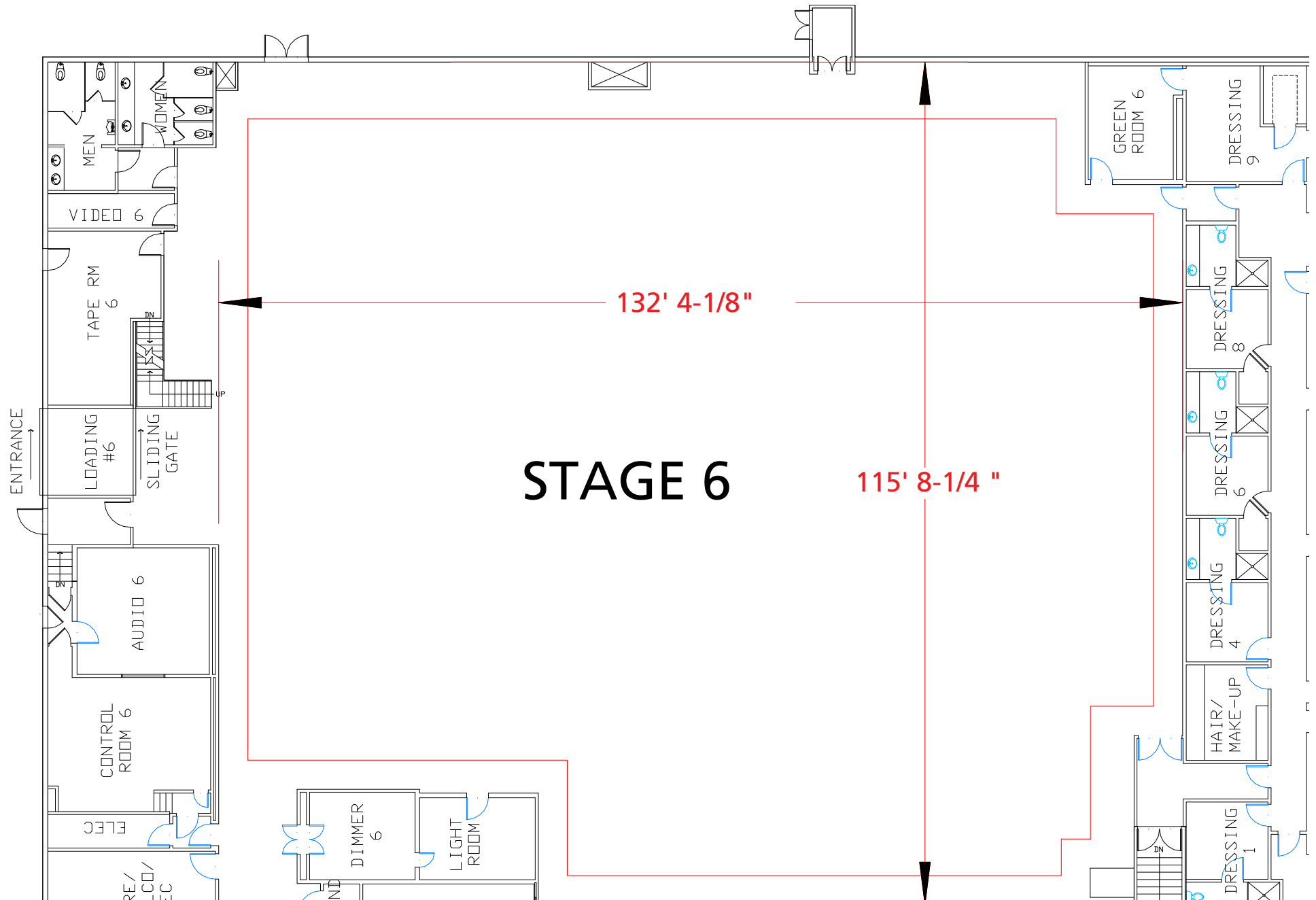


# Stage 6



Width	Length	Height (Perms)	Total Stage Square Footage	Floor Type	Door (WxH)
115' 8 1/4"	132' 4 1/8"	30'	21,865	Wood	12' x 14'10"



# Stage Specifications: Stage 6

## Stage Specifications - (Dimensions Include 4' Fire Lane)

Width – 115' 8 1/4"  
Length – 132' 4 1/8"  
Height (Perms) – 30'  
Total Square Footage – 21,865  
Floor Type – Wood  
Elephant Door (W X H) – 11' 10" X 17' 10"  
Full Service Control Room Available On Stage

## Support Space- (Available On Stage)

Offices – 3  
Dressing Rooms – 9  
Make Up Rooms – 1  
Wardrobe – 1  
Greenrooms – 1  
Galley - 1

## Heavy Equipment

Stage Management to authorize

## Electric Service

Production Power - 120/208 800 Amp Per Phase Bus Bar, 2400 Amp Total Standard. Additional 10,000 Amps Available  
240 Volts - No  
480 Volts - No  
Tech Power - Available  
Power In Grid - Available (Single Phase 120/208)  
Infrastructure For Generator Backup

## HVAC

HVAC - (6) 20 Ton (Nominal) Cooling Only Package Units.  
Redlight Control - Yes  
Ventilation - No  
Heating - Yes

## Stage Extras

Hose Bib - Yes  
Gas - Yes; Compressed Air - No  
Drain - No  
Wireless Internet – Yes; Phone – Yes; Fax – No