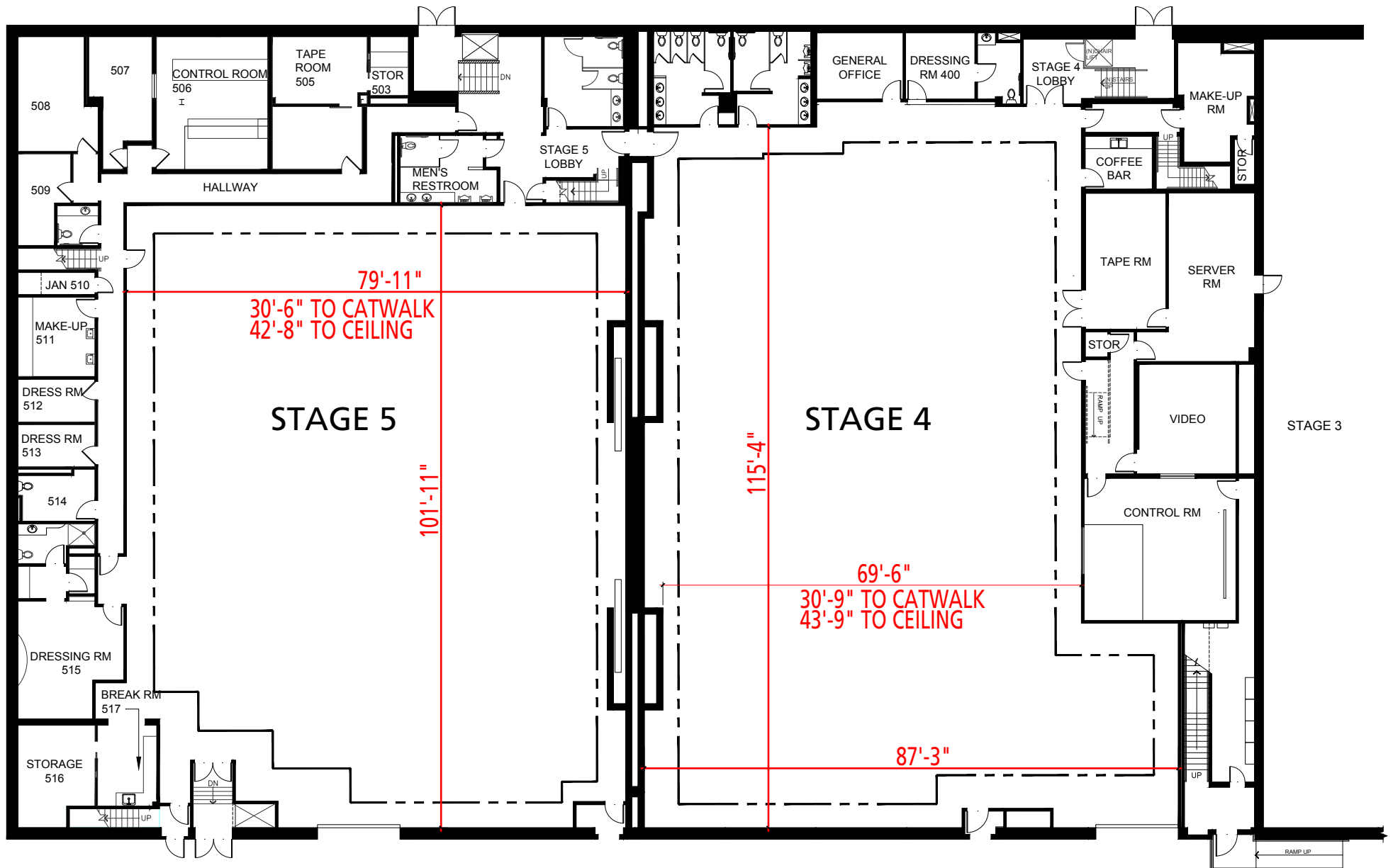


Width	Length	Height (Perms)	Total Stage Square Footage	Floor Type	Door (WxH)
79' 11"	101' 11"	30'6"	9,867	Wood	13' x 17'



Stage Specifications: Stage 5

Stage Specifications - (Dimensions Include 4' Fire Lane)

Width – 79' 11'

Length – 101' 11"

Height (Perms) – 30'6"

Total Square Footage – 9,867 sf

Floor Type – Wood

Elephant Door (W X H) – 13' X 17'

Full Service Control Room Available On Stage

Support Space- (Available On Stage)

Offices - 9

Dressing Rooms - 5

Make Up Rooms - 1

Wardrobe - 1

Greenrooms – 1

Galley - 2

Heavy Equipment

Stage Management to authorize

Electric Service

Production Power - 120/208 800 Amp Per Phase Bus Bar, 2400 Amp Total Standard. Additional 7200 Amps Available

240 Volts - No

480 Volts - No

Tech Power - Available

Power In Grid - Available (Single Phase 120/208)

HVAC

HVAC- (4) 20 Ton (Nominal) Cooling Only Package Units.

Redlight Control - Yes

Ventilation - Yes

Heating – Yes

Stage Extras

Hose Bib - No

Gas - No; Compressed Air – No

Drain - No

Wireless Internet – Yes

Phone – Yes; Fax – No