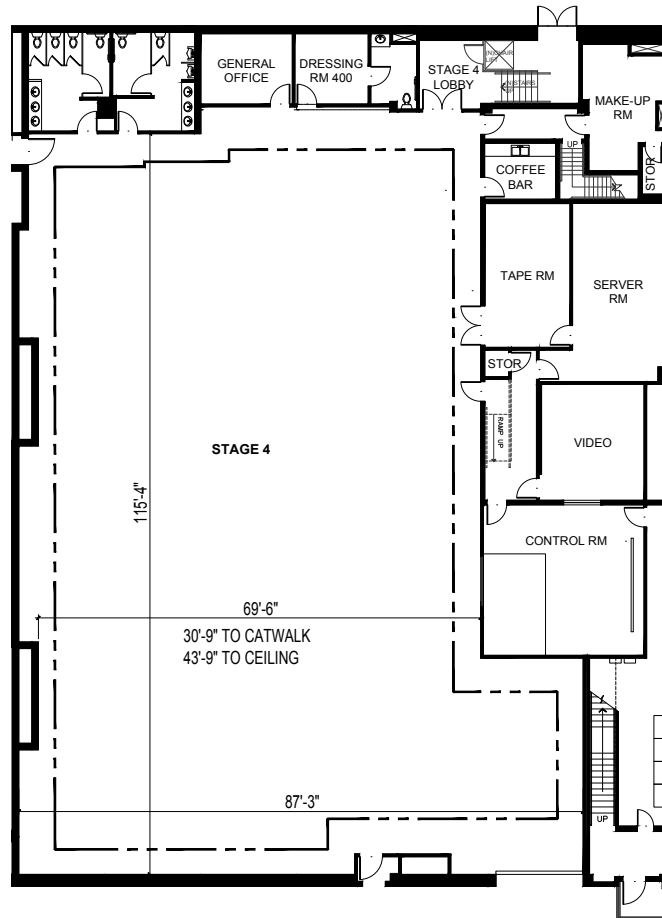
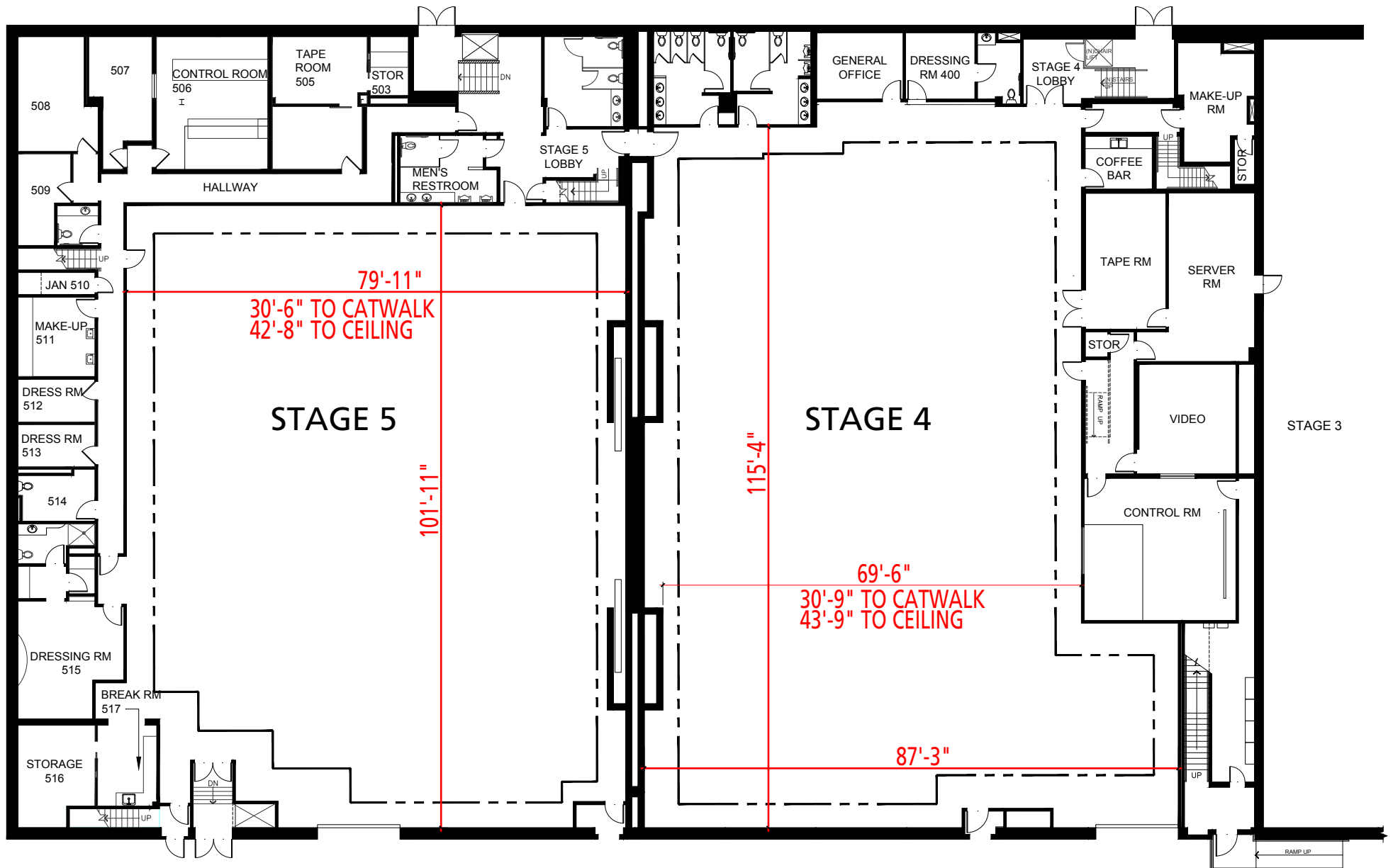


Stage 4



Width	Length	Height (Perms)	Total Stage Square Footage	Floor Type	Door (WxH)
87' 3"	115' 4"	30' 9"	9,933	Wood	13'5" x 18'8"



Stage Specifications: Stage 4

Stage Specifications - (Dimensions Include 4' Fire Lane)

Width – 87' 3"
Length – 115' 4"
Height (Perms) – 30'9"
Total Square Footage – 9,933 sf
Floor Type – Wood
Elephant Door (W X H) – 13' 5" X 18' 8"
Full Service Control Room Available On Stage

Support Space- (Available On Stage)

Offices - 3
Dressing Rooms - 5
Make Up Rooms - 1
Wardrobe - 0
Greenrooms – 1
Galley - 2

Heavy Equipment

Stage Management to authorize

Electric Service

Production Power - 120/208 800 Amp Per Phase Bus Bar, 2400 Amp Total Standard. Additional 7200 Amps Available
240 Volts - Accessible
480 Volts - Accessible
Tech Power- Available
Power In Grid - Available (Single Phase 120/208)

HVAC

HVAC- (3) 20 Ton (Nominal) Cooling Only Package Units.
Redlight Control - Yes
Ventilation - No
Heating – No

Stage Extras

Hose Bib - Yes
Gas - No; Compressed Air - No
Drain - Yes
Wireless Internet – Yes
Phone – Yes; Fax – No