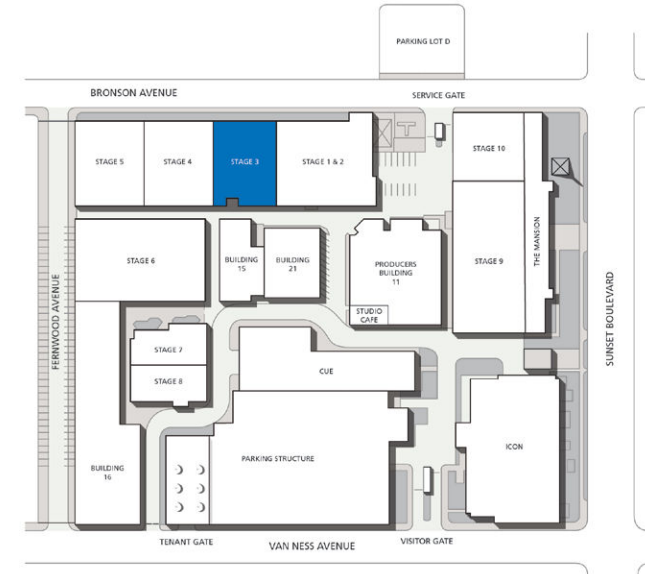
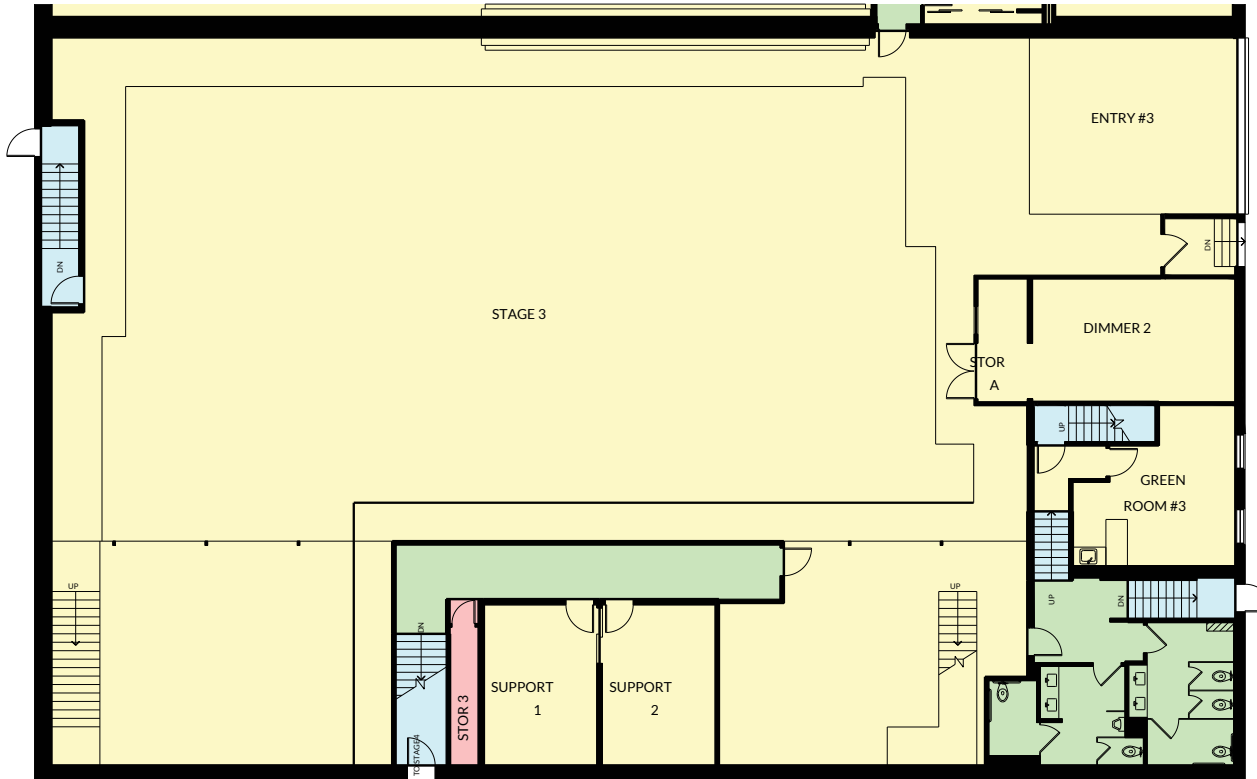
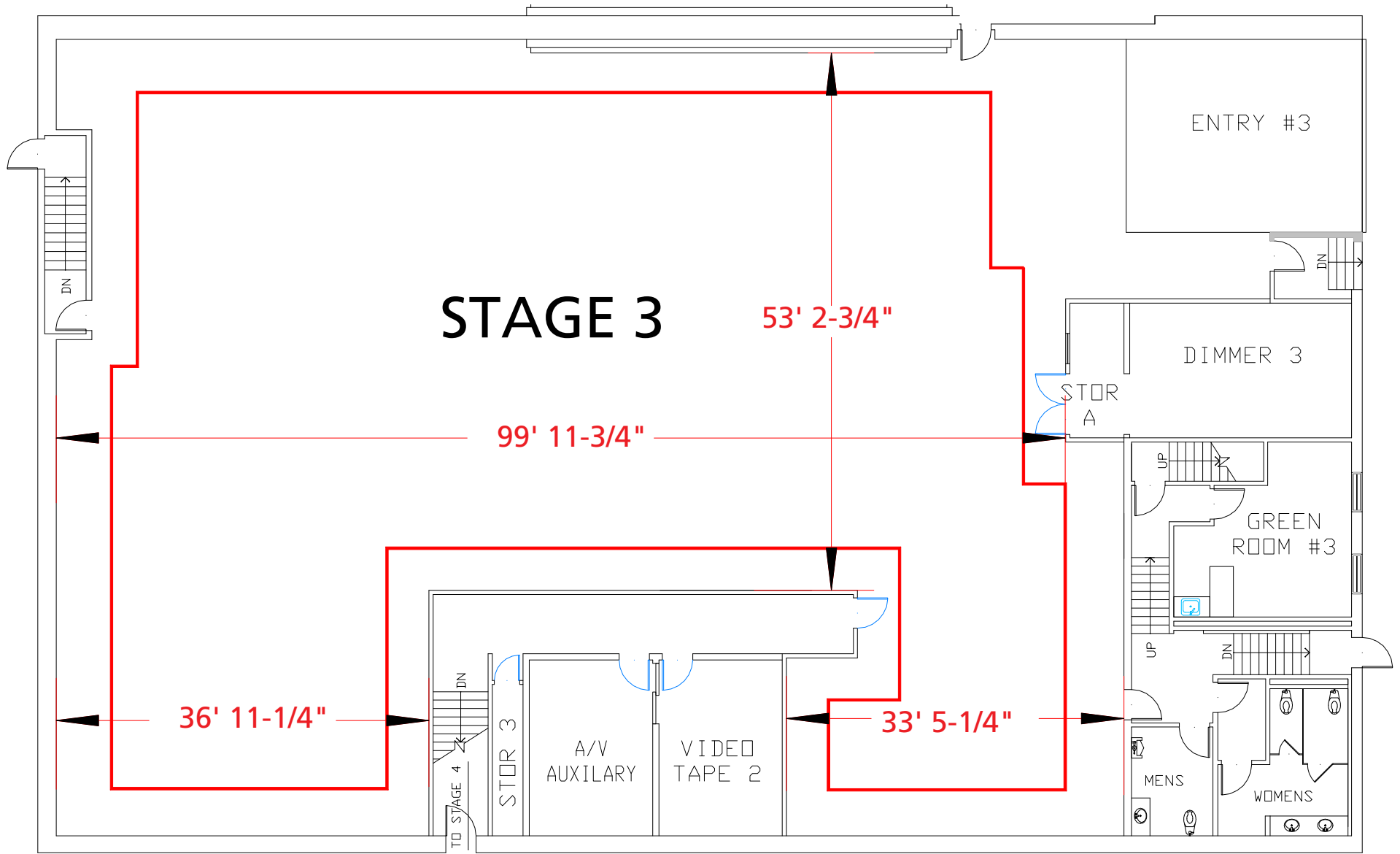


Stage 3



Width	Length	Height (Perms)	Total Stage Square Footage	Floor Type	Door (WxH)
53' 2 3/4"	99' 11 3/4"	30'	8,668	Wood	17'8" x 17'7"



Stage Specifications: Stage 3

Stage Specifications - (Dimensions include 4' Fire Lane)

Width – 53' 2 3/4"
Length – 99' 11 3/4"
Height (Perms) – 30'
Total Square Footage – 8,668 sf
Floor Type – Wood
Elephant Door (W X H) – 17' 8" X 17' 7"
Full Service Control / Audio / Video Tape Room Available

Support Space- (Available On Stage)

Offices - 2
Dressing Rooms - 8
Make Up Rooms - 1
Wardrobe - 1
Greenrooms – 1 (2 Additional Upon Availability)
Galley - 0

Heavy Equipment

Stage Management to authorize

Electric Service

Production Power - 120/208 800 Amp Per Phase Bus Bar, 2400 Amp Total Standard. Additional 7200 Amps Available
240 Volts - Accessible
480 Volts - Accessible
Tech Power - No
Power In Grid - Available (Single Phase 120/208)

HVAC

HVAC - (3) 20 Ton (Nominal) Cooling Only Package Units.
Redlight Control - Yes
Ventilation - No
Heating – Yes

Stage Extras

Hose Bib - Yes
Gas - Yes; Compressed Air – No
Drain - Yes
Wireless Internet – Yes ; Phone – Yes ; Fax – No