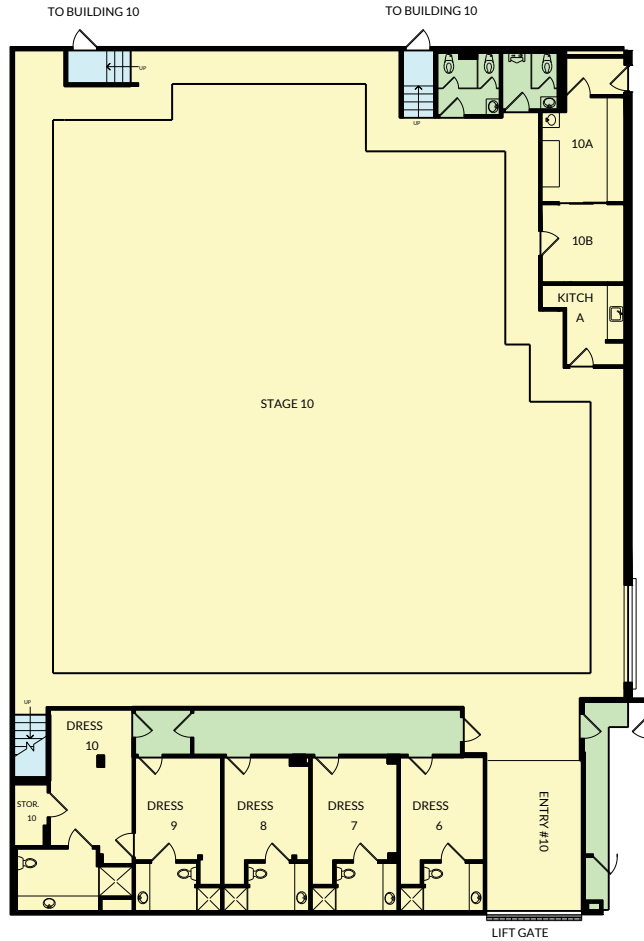
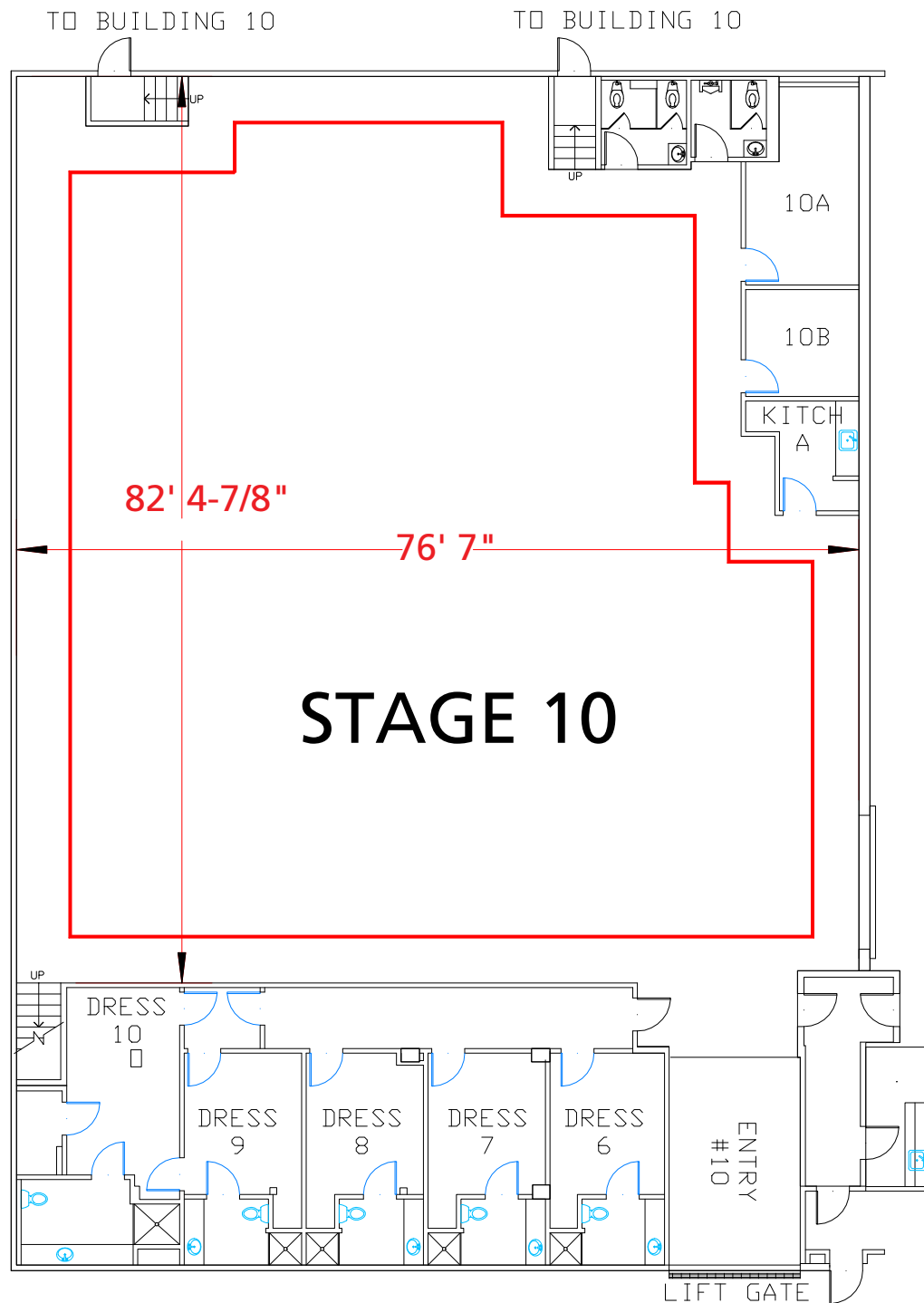


# Stage 10



Width	Length	Height (Perms)	Total Stage Square Footage	Floor Type	Door (WxH)
76'7"	82' 4 7/8"	29'	6,476	Wood	11'4" x 14'1"



# Stage Specifications: Stage 10

## Stage Specifications - (Dimensions Include 4' Fire Lane)

Width – 76'7"

Length – 82' 4 7/8"

Height (Perms) – 29'

Total Square Footage – 6,476

Floor Type – Wood

Elephant Door (W X H) – 11' 4" X 14' 1"

## Support Space- (Available On Stage)

Offices – 0

Dressing Rooms – 5

Make Up Rooms – 1

Wardrobe – 0

Greenrooms – 0

Galley - 1

## Heavy Equipment

Stage Management to authorize

## Electric Service

Production Power - 120/208 800 Amp Per Phase Bus Bar, 2400 Amp Total Standard.

240 Volts - Accessible

480 Volts - No

Tech Power - Available

Power In Grid - No

## HVAC

HVAC- (2) 40 Ton Chilled Water Air Handlers Adjustable For Sound

Redlight Control - Yes

Ventilation - No

Heating - No

## Stage Extras

Hose Bib - No

Gas - No; Compressed Air - No

Drain - No

Wireless Internet – Yes

Phone – Yes; Fax – No